

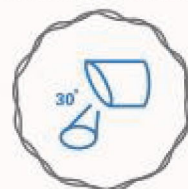
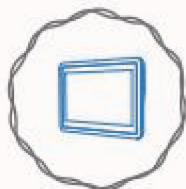
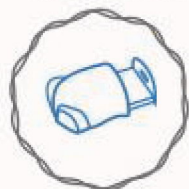
Laparoscopic Simulator

Abdomen

16 inch Screen

lifting trolley(option)

30°endoscope



instruments
(4pcs)

suture and anastomosis model

basic modules

cannula and
sutures

Plug and Play



16 inch screen(1080P)

30° endoscope

Abdominal Shape



Electric lift button

Adaptice to the trainer's height

Lockable Wheel

Abdomen With Screen(Hdmi interface)

16 inch Screen

HDMI Plug and Play

6 million pixel endoscope



The screen is rotatable with any angles

Face to you always



30° Endoscope

30° Endoscope with light source

Ultra-wide view angle

6 million pixels

30° angle



Reusable Instruments

Maryland Dissector
Double Action Scissor

Fenestrated Grasper
Needle Holder



Basic Suture & Advanced Anastomosis



3D Soft Tissue Pad

Different Incisions



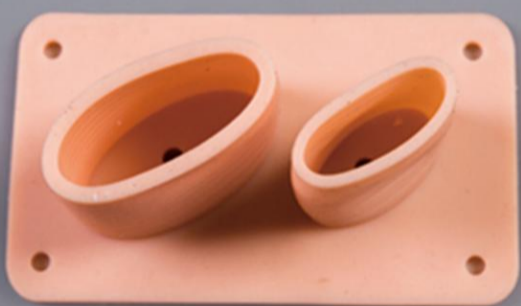
Tumor Remove Module

Simulated Myomectomy



End to end enastomosis

360 ° Jejunojejunostomy



Stereo anastomosis

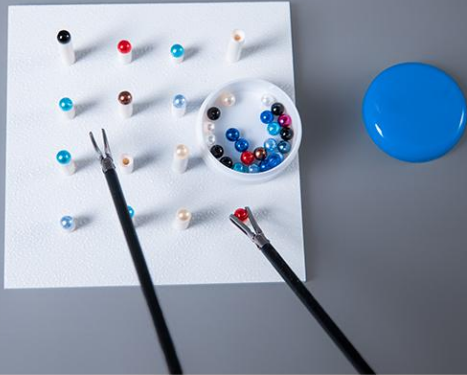
Semi-free stereoscopic
anastomosis



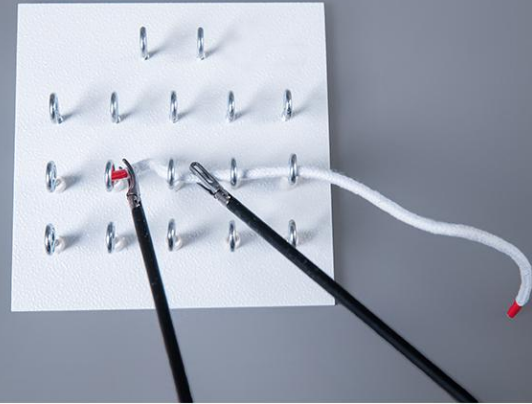
Incision anastomosis module

Fix point linear sture

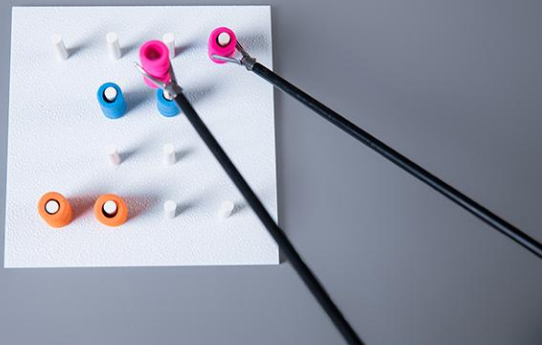
Basic Technology Modules



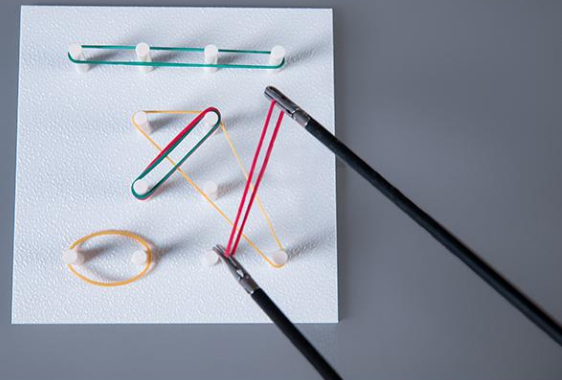
Pea On a Peg



Thread Transfer



Post and Sleeve



Spendex

Plug and Play

Abdominal shape

